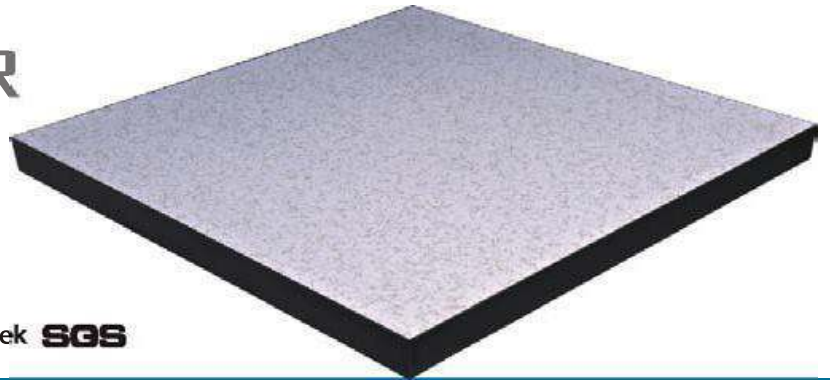


**CTLINK RAISED ACCESS FLOOR SYSTEMS**

**CTLINK**

# WOODCORE ACCESS FLOOR

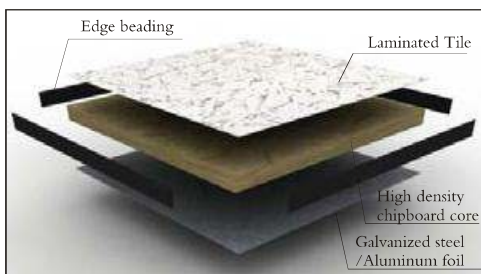
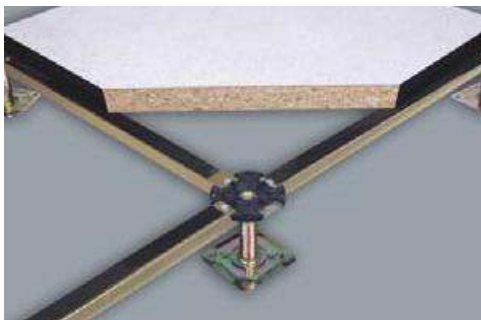


## PVC SEALED PANEL



### Structure

Woodcore access floor consists of high-density (720Kg/m<sup>3</sup>) chipboard. Galvanized steel sheet/aluminum foil is bonded to the bottom of the chipboard. HPL or PVC is stuck to the top of the chipboard, four edges are sealed with PVC edging strip.



### Size

600×600×40mm  
600×600×30mm

### Feature

- Light weight, small noise when working
- Dimension accuracy with nice interchangeability.
- Strong loading capacity, fire resistance B2 and excellent anti-static properties.
- Good sealing and water-proof.

Type	Size	Concentrated	Impact Load	Ultimate Load	Uniform Load	Rolling Load
International	mm	N	N	N	N/M <sup>2</sup>	10Passes 10000 Passes
Light duty	600 × 600	≥ 2990	670	≥ 8890	≥ 12500	2215 1548
Medium duty	600 × 600	≥ 3596	670	≥ 10799	≥ 19796	2959 2215
Heavy duty	600 × 600	≥ 4498	670	≥ 13494	≥ 23294	3596 2959

# WOODCORE ACCESS FLOOR



## ENCAPSULATED PANEL

### Structure

Floor panel is encapsulated to provide full steel encasement, steel to be high quality galvanized steel sheet as top and bottom. High density chipboard as the core.



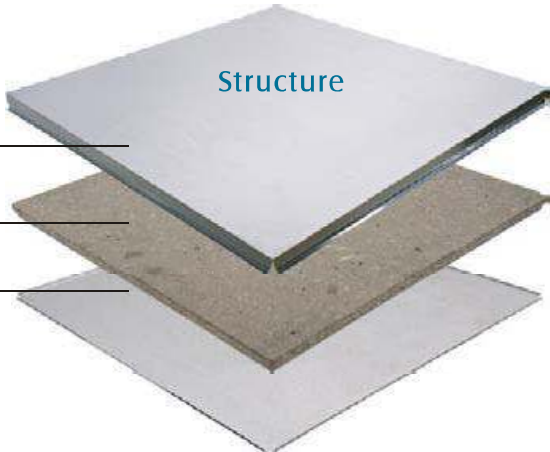
### Size

600×600×30mm  
600×600×25mm

Galvanized steel

Chipboard core

Galvanized steel



### Application

- Woodcore panel is widely used in high-grade rooms, such as banks, telecommunication centers, smart offices and computer rooms.
- This panel is particularly suitable for areas of high humidity.
- High dimension accuracy and environmental proof.



Type	Size	Concentrated	Impact Load	Ultimate Load	Uniform Load	Rolling Load
International	mm	N	N	N	N/M <sup>2</sup>	10 Passes 10000 Passes
Light duty	600 × 600	≥2990	670	≥8890	≥12500	2215 1548
Medium duty	600 × 600	≥3596	670	≥10799	≥19796	2959 2215

# UNDER STRUCTURE



## Stringers

Stringers provide lateral resistance to heavy rolling loads & seismic loading.

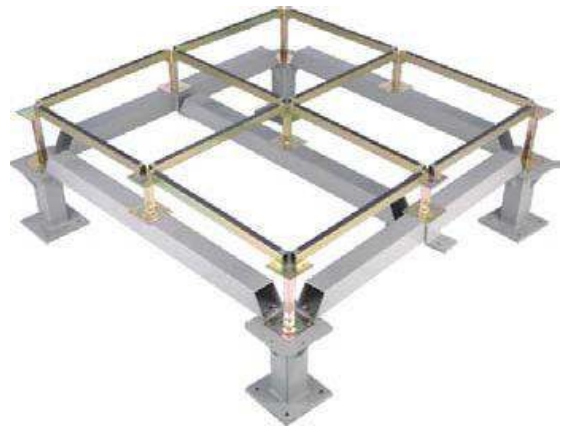


## Heavy pedestal



C01 C02 C03 C04

## Cross head pedestal



## Seismic pedestal



F06 F01 F02 F05

## Flat head pedestal



W03 W04 W07 W09

## Round head pedestal



## Ramp pedestal



## Pedestal bracing

Finished flooring height (FFH) from 80mm to 2,000mm is available, with high loading strength.



Φ38 Φ32

## Bracing kit

CTLINK FLOOR  
www.baohagroup.com.vn

# Covering Material

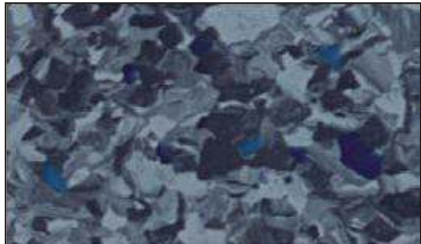
Variety of covering materials are available

A comprehensive selection of CTLINK covering materials are available including more colors of HPL, PVC and other interior finishes, to satisfy customer's different requirements. Please contact with us if you want other covering materials which is not listed below.



Ceramic tile

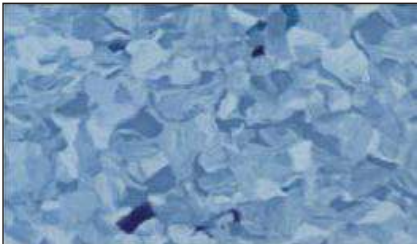
## Homogeneous vinyl



2051



2060



2066

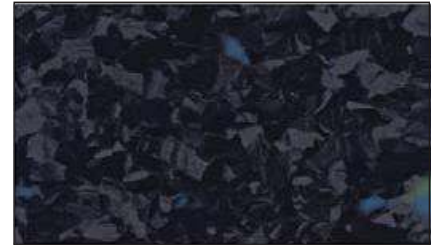
# Covering Material



2073



2072



2050

## Linoleum

---



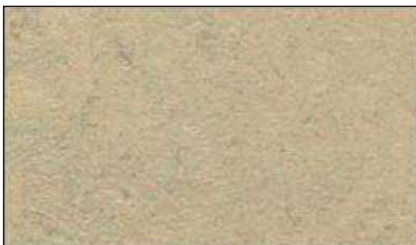
3881



3882



3856



3858



3872



3876



3846



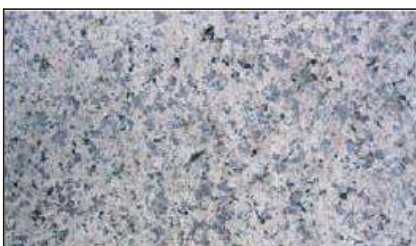
3825



3870

## Granite

---



G655

# HPL/Vinyl Finishes for Raised Access Floor Systems

## Antistatic HPL

CTLINK Antistatic HPL  
1.2/1.6 mm

Electrical resistance  
 $1 \times 10^8 - 2 \times 10^{11}$  ohm



CT8192



CT8193



CT8194



CT8191



CT8132



CT8144



CT8137



CT8119



CT8117



CT8311



CT8345



CT8213

## Vinyl

CTLINK Conductive  
Vinyl 2.0/3.0 mm

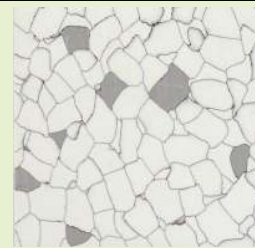
Electrical resistance:  
 $2.5 \times 10^4 - 1 \times 10^6$  ohm



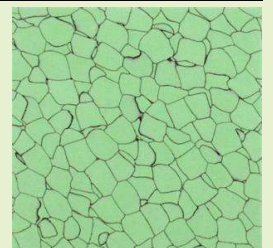
VINYL 04



VINYL 05



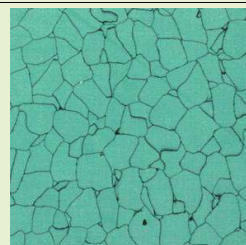
VINYL 07



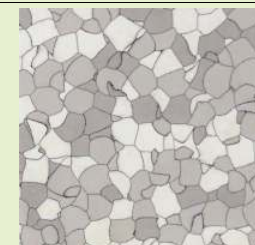
VINYL 08



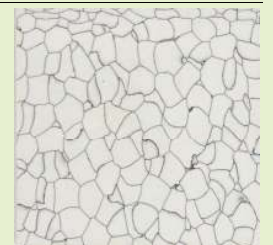
VINYL 09



VINYL 10



VINYL 11



VINYL 13

**CTLINK**  
**Bao Ha Group**

### Hanoi Office:

No. 11, 67/5 Lane, Nguyen Van Cu Str.,  
Ngoc Lam Ward, Long Bien Dist.,  
Hanoi, Vietnam  
Tel/Fax: 844 36274706  
Hotline: 84 902288843  
Email: [contact@baohagroup.com](mailto:contact@baohagroup.com)  
Website: <http://www.baohagroup.com.vn>

### HCM Office:

No. 5/7, Nguyen Sieu Str.,  
Ben Nghe Ward, District 1,  
Ho Chi Minh, Vietnam  
Tel/Fax: 848 36274706  
Hotline: 84 902299953  
Email: [contact@baohagroup.com](mailto:contact@baohagroup.com)  
Website: <http://www.baohagroup.com.vn>

# FLOORING ACCESSORIES



Intertek **SGS**



CTLINK FLOOR presents and extensive choices for accessories, including electrical boxes, grommets, panel lifters and air diffuser and so on



Round brush grommet



Surface brush grommet



Split integral grommet



Round grommet



Square grommet



Integral grommet



Panel lifter



Outlet box B



Outlet box C

**CTLINK**  
**Bao Ha Group**

**Hanoi Office:**  
No. 11, 67/5 Lane, Nguyen Van Cu Str.,  
Ngoc Lam Ward, Long Bien Dist.,  
Hanoi, Vietnam  
Tel/Fax: 844 36274706  
Hotline: 84 902288843  
Email: [contact@baohagroup.com](mailto:contact@baohagroup.com)  
Website: <http://www.baohagroup.com.vn>

**HCM Office:**  
No. 5/7, Nguyen Sieu Str.,  
Ben Nghe Ward, District 1,  
Ho Chi Minh, Vietnam  
Tel/Fax: 848 36274706  
Hotline: 84 902288875  
Email: [contact@baohagroup.com](mailto:contact@baohagroup.com)  
Website: <http://www.baohagroup.com.vn>