

CTLINK RAISED ACCESS FLOOR SYSTEMS



CALCIUM SULPHATE ACCESS FLOOR

CTLINK FLOOR
www.baohagroup.com.vn



ENCAPSULATED PANEL



Structure

Encapsulated with high density fiber calcium sulphate core.

Size

600×600×30mm

Feature

- Full steel encasement and good sealing.
- Constituted by all steel sheet, good loading capacity.
- High dimension accuracy and excellent interchangeability.
- Water-proof, fire-proof, antiseptis and sound insulation.
- Elaborated made and good decorative effect.



Type	Size	Concentrated	Impact Load	Ultimate Load	Uniform Load	Rolling Load
International	mm	N	N	N	N/M ²	10 Passes 10000 Passes
Heavy duty	600 × 600	≥ 4498	670	≥ 13494	≥ 23294	3596 2959
Extra Heavy duty	600 × 600	≥ 5595	670	≥ 16797	≥ 33084	4498 3596

CALCIUM SULPHATE ACCESS FLOOR



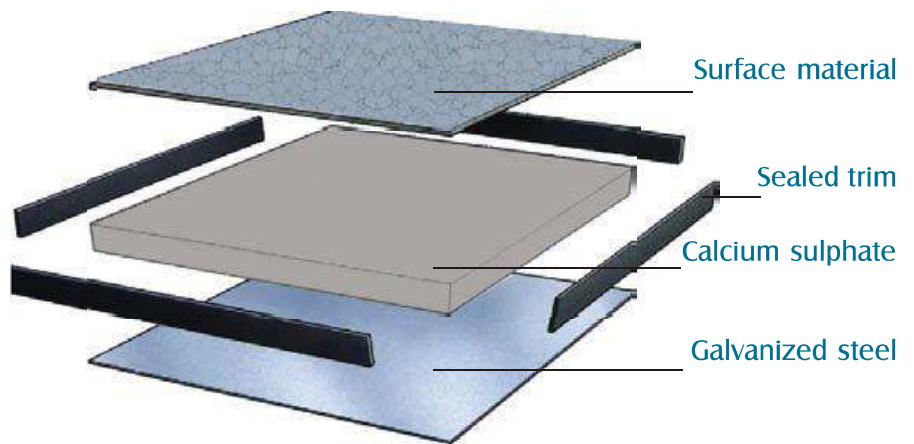
PVC SEALED PANEL

Size

600×600×30mm

Structure

Floor panel is encapsulated to provide full steel encasement, steel to be high quality galvanized steel sheet as top and bottom. High density calcium sulphate as the core.

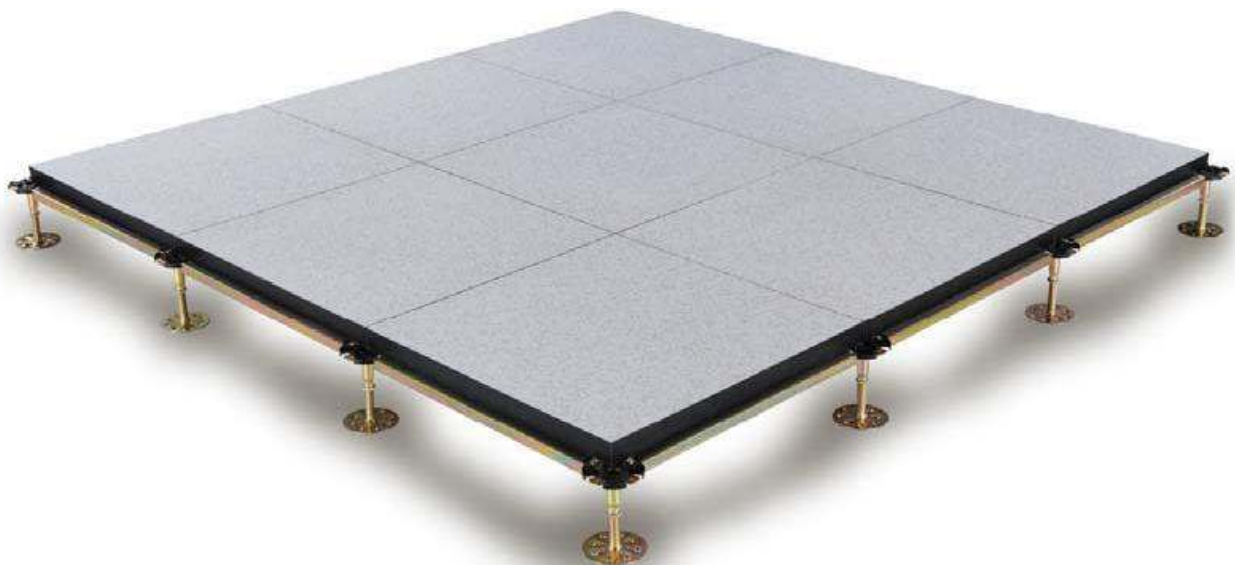


PVC panel

Floor consists of calcium sulphate core. Galvanized steel sheet/aluminum foil is bonded to the bottom. HPL or PVC is stuck to the top, four edges sealed with PVC edging strip.

Application

Anti-static calcium sulphate raised floor is widely used in telecommunication room, power station, computer room, factory clean room and other anti-static requiring places.



UNDER STRUCTURE



Stringers

Stringers provide lateral resistance to heavy rolling loads & seismic loading.

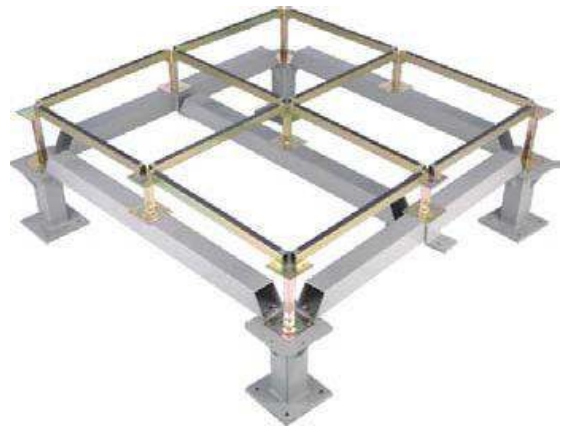


Heavy pedestal



C01 C02 C03 C04

Cross head pedestal



Seismic pedestal



F06 F01 F02 F05

Flat head pedestal



W03 W04 W07 W09

Round head pedestal



Ramp pedestal



Pedestal bracing

Finished flooring height (FFH) from 80mm to 2,000mm is available, with high loading strength.



Φ38 Φ32

Bracing kit

CTLINK FLOOR
www.baohagroup.com.vn

Covering Material

Variety of covering materials are available

A comprehensive selection of CTLINK covering materials are available including more colors of HPL, PVC and other interior finishes, to satisfy customer's different requirements. Please contact with us if you want other covering materials which is not listed below.



Ceramic tile

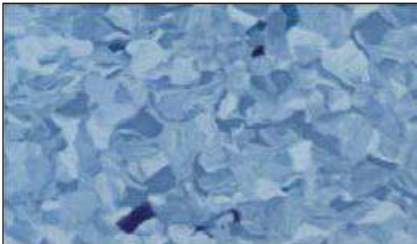
Homogeneous vinyl



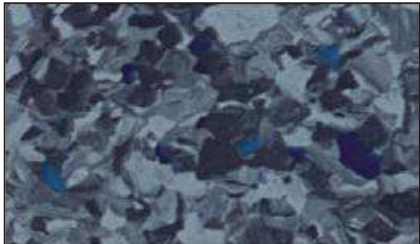
2051



2060



2066



Covering Material



2073



2072



2050

Linoleum



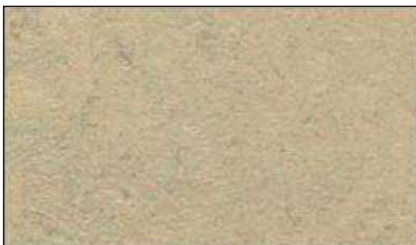
3881



3882



3856



3858



3872



3876



3846

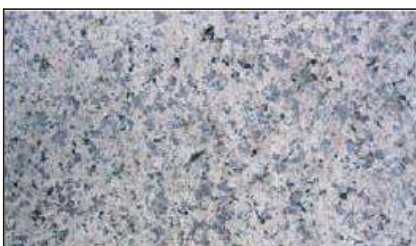


3825



3870

Granite



G655

HPL/Vinyl Finishes for Raised Access Floor Systems

Antistatic HPL

CTLINK Antistatic HPL
1.2/1.6 mm

Electrical resistance
 $1 \times 10^8 - 2 \times 10^{11}$ ohm



CT8192



CT8193



CT8194



CT8191



CT8132



CT8144



CT8137



CT8119



CT8117



CT8311



CT8345



CT8213

Vinyl

CTLINK Conductive
Vinyl 2.0/3.0 mm

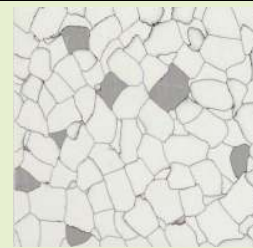
Electrical resistance:
 $2.5 \times 10^4 - 1 \times 10^6$ ohm



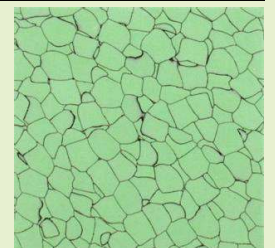
VINYL 04



VINYL 05



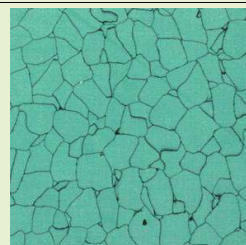
VINYL 07



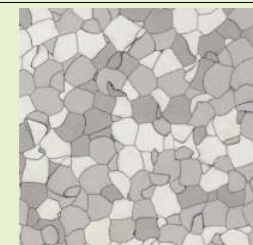
VINYL 08



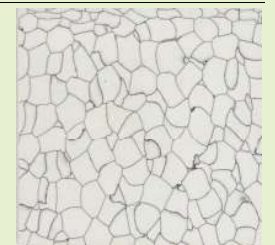
VINYL 09



VINYL 10



VINYL 11



VINYL 13

CTLINK
Bao Ha Group

Hanoi Office:

No. 11, 67/5 Lane, Nguyen Van Cu Str.,
Ngoc Lam Ward, Long Bien Dist.,
Hanoi, Vietnam
Tel/Fax: 844 36274706
Hotline: 84 902288843
Email: contact@baohagroup.com
Website: <http://www.baohagroup.com.vn>

HCM Office:

No. 5/7, Nguyen Sieu Str.,
Ben Nghe Ward, District 1,
Ho Chi Minh, Vietnam
Tel/Fax: 848 36274706
Hotline: 84 902299953
Email: contact@baohagroup.com
Website: <http://www.baohagroup.com.vn>

FLOORING ACCESSORIES



Intertek **SGS**



CTLINK FLOOR presents and extensive choices for accessories, including electrical boxes, grommets, panel lifters and air diffuser and so on



Round brush grommet



Surface brush grommet



Split integral grommet



Round grommet



Square grommet



Integral grommet



Panel lifter



Outlet box B



Outlet box C

CTLINK
Bao Ha Group

Hanoi Office:
No. 11, 67/5 Lane, Nguyen Van Cu Str.,
Ngoc Lam Ward, Long Bien Dist.,
Hanoi, Vietnam
Tel/Fax: 844 36274706
Hotline: 84 902288843
Email: contact@baohagroup.com
Website: <http://www.baohagroup.com.vn>

HCM Office:
No. 5/7, Nguyen Sieu Str.,
Ben Nghe Ward, District 1,
Ho Chi Minh, Vietnam
Tel/Fax: 848 36274706
Hotline: 84 902288875
Email: contact@baohagroup.com
Website: <http://www.baohagroup.com.vn>